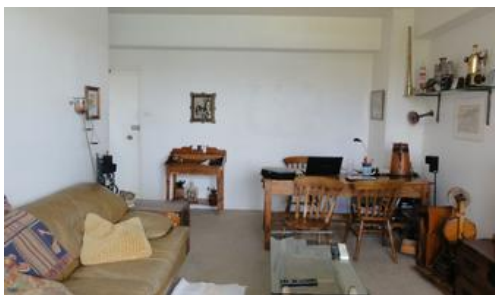


Sold

## Unit 53, 11 Sutherland Crescent, Darling Point



### Waterfront Apartment With Stunning Views

A prized position in the exclusive 'Broadwaters' security block, this boutique apartment is very light, sunny and private, the views are amazing as you would expect from a waterfront located apartment. The panoramic water views are visible within the entire apartment. Features original kitchen & retro bathroom design. Property has level access via lift and apartment includes a private balcony. Other features include large bedroom with built in robe, shared laundry, full bath with bathtub and the recently upgraded security building's waterfront entertaining/BBQ area, kayak store and sundrenched harbour pool are brilliant. Prestigiously located right on the harbour, it's a few minutes to the CBD by water taxi & just a short stroll to village store, McKell Park ferry wharf, bus routes, Double Bay restaurants, Edgecliff Centre shops/trains.

Strata Fee: \$1,245/p.q

Council Rates: \$324/p.q

Water Rates: \$170/p.q

*The above information provided has been furnished to us by the vendor/s. We have not verified whether or not that information is accurate and do not have any belief in one way or the other in its accuracy. We do not accept any responsibility to any person for its accuracy and do no more than pass it on. All interested parties should make and rely upon their own inquiries in order to determine whether or not this information is in fact accurate.*

1 bed 1 bath

|                      |             |
|----------------------|-------------|
| <b>Price</b>         | SOLD        |
| <b>Property Type</b> | residential |
| <b>Property ID</b>   | 58          |
| <b>Floor Area</b>    | 63 m2       |

#### Agent Details

Chris Momitsas - 0424 24 74 76

#### Office Details

Surry hills  
Suite 2, 431 Cleveland Street Surry  
Hills NSW 2010 Australia  
02 8065 0500



Sydney  
City  
Fringe